

81452.000

LED 24W 2520lm 3000K warm white
Phase dimmable
Version 6
Covered mounting detail
Spherolit lens, wallwash

Product description

Recessed housing: metal, black, with connection cable L 850mm. Wallwashers: cast aluminium, white (RAL9002) powder-coated. 0°-90° tilt. Flush cassette: polymer, white.
Mounting frame: size 7, polymer, white (RAL9002). Mounting for ceiling thicknesses of 1-30mm.
Includes ERCO control gear, dimmable. 2-pole terminal block.
LED module: high-power LEDs on metal-core PCB. Collimating lens made of optical polymer.
Front cover: polymer, white.
Dimming with external dimmers possible (trailing edge).
Approved for use as emergency lighting according to IEC / EN 60598-2-22.
Protection Class II
Weight 2.10kg

Technical data

Luminous flux of the luminaire	1902lm
Connected load	29.0W
Luminaire efficacy	66lm/W
Colour deviation	1.5 SDCM
Colour rendition index	CRI 92
Lumen maintenance (LED manufacturer specifications)	L90/B10 ≤50000h L90 ≤100000h
LED failure rate	0.1% ≤50000h
Dimming range	1%-100%
Dimming method	CCR_PWM
LMF	E
Energy efficiency class	EEI A+
Standby power per control gear	--
Luminaires per circuit breaker B16	112

For your regional contact in the ERCO
Sales network [click here](#)
www.erco.com/contact

Technical Region:
220V-240V/50Hz-60Hz
We reserve the right to make technical
and design changes.
Edition: 24.06.2020
Current version under
www.erco.com/81452.000

Planning data

Illuminance E_n (lx)

Specifications:

Number of luminaires $n > 5$

Wall height (m) 6.0

Angle of tilt 35°

LED 24W 2520lm 3000K warm white

Offset from wall (m)	1.80		1.80		1.80		2.10	
	1.80		2.10		2.40		2.40	
Luminaire spacing (m)	below the luminaire	between the luminaires	below the luminaire	between the luminaires	below the luminaire	between the luminaires	below the luminaire	between the luminaires
0.500	85	93	73	82	66	70	48	55
1.000	145	158	128	135	119	111	85	92
1.500	179	197	160	163	151	130	111	116
2.000	192	205	172	171	162	138	124	128
2.500	192	197	170	163	160	133	128	128
3.000	177	181	157	150	146	122	125	122
3.500	158	165	140	137	129	112	117	113
4.000	135	146	118	123	108	101	106	105
4.500	112	122	97	105	87	88	93	96
5.000	91	99	78	85	69	73	79	85
5.500	73	77	62	68	55	59	66	72

Cleaning (a)	1				2				3			
	P	C	N	D	P	C	N	D	P	C	N	D
LMF	0.96	0.94	0.90	0.86	0.93	0.91	0.86	0.81	0.92	0.90	0.84	0.79
RSMF	0.99	0.97	0.95	0.92	0.98	0.97	0.95	0.92	0.98	0.97	0.95	0.92

Hours of operation (h)	1000	5000	10000	20000	30000	40000	50000
LLMF	1.00	0.99	0.98	0.96	0.94	0.92	0.90
LSF	1	1	1	1	1	1	1

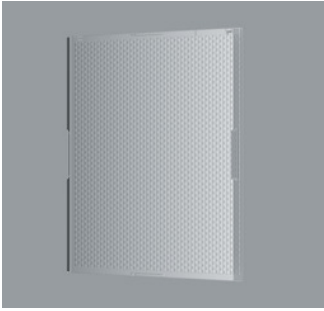
- MF LMFxRSMFxLLMFxLSF
- MF Maintenance Factor
- LMF Luminaire Maintenance Factor
- RSMF Room Surface Maintenance Factor
- LLMF Lamp Lumens Maintenance Factor
- LSF Lamp Survival Factor
- P Room pure
- C Room clean
- N Room normal
- D Room dirty

Technical data in accordance with international norms and standards

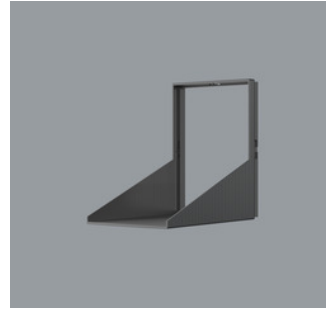
- IEC 60598 Luminaires – Part 1+2: general requirements, specific requirements and tests
- IEC 62031 LED modules for general lighting – safety requirements
- IEC 62471 Photobiological safety of lamps and lamp systems
- EN 13032-4 Light and lighting – measurement and representation of photometric data
- CIE 13 Method of measuring and specifying colour rendering properties of light sources

All technical data is subject to industrially standard tolerances.
Also see www.erco.com/erco-led

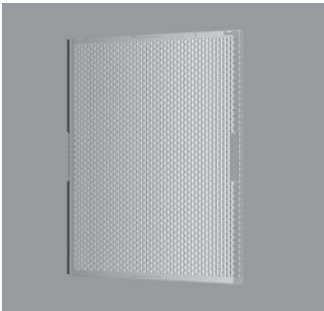
Accessories



70924.000
Spherolit lens spot
made of optical polymer.
Replacement without tools.



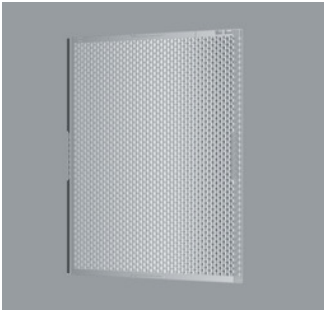
70610.000
Snoot
Polymer.
Black



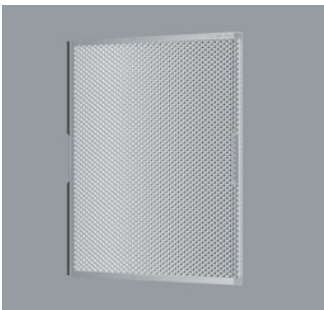
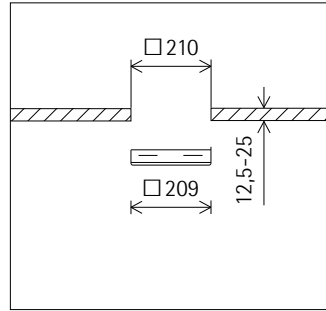
70925.000
Spherolit lens flood
made of optical polymer.
Replacement without tools.



82923.000
Mounting frame
For flush mounting of luminaires with
ceiling aperture 206x206mm.
Polymer, white (RAL9002). Mounting
for ceiling thicknesses of 12.5-25mm.
The recess depth of the luminaire
increases by 2mm.
Weight 0.30kg



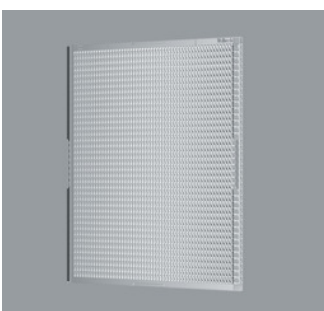
70926.000
Spherolit lens wide flood
made of optical polymer.
Replacement without tools.



70999.000
Spherolit lens extra wide flood
made of optical polymer.
Replacement without tools.



70929.000
Spherolit lens oval flood
made of optical polymer.
Replacement without tools.



70928.000
Spherolit lens wallwash
made of optical polymer.
Replacement without tools.