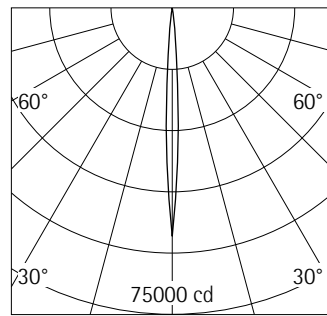


58519.000 White (RAL9002)
 LED 13W 1240lm 3000K warm white
 Casambi Bluetooth
 Version 5
 Spherulit lens, narrow spot

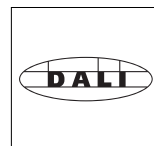
Product description
 Cylindrical light head: cast aluminium, powder-coated. 270° tilt.
 Housing: polymer, rotatable on 3-circuit adapter through 360°.
 ERCO Casambi control gear.
 3-phase adapter for ERCO 220-240V track: polymer, white.
 LED module: high-power LEDs on metal-core PCB. Collimating lens made of optical polymer.
 Control via Casambi app (Android/iOS) with Bluetooth Low Energy (BLE)-capable mobile devices or "Casambi Ready" products.
 Protection Class II
 Weight 0.99kg



h(m)	E(lx)	D(m)
		6°
1	55924	0.10
2	13981	0.21
3	6214	0.31
4	3495	0.42
5	2237	0.52

Technical data

Luminous flux of the luminaire	1031lm
Connected load	15.0W
Luminaire efficacy	69lm/W
Colour deviation	1.5 SDCM
Colour rendition index	CRI 92
Lumen maintenance (LED manufacturer specifications)	L90/B10 ≤50000h L90 ≤100000h
LED failure rate	0.1% ≤50000h
Dimming range	0.1%-100%
Dimming method	CCR
LMF	E
Energy efficiency class	EEI A+
Standby power per control gear	0.38W
Luminaires per circuit breaker B16	177



DALI controllable via accessory
 DALI Casambi Gateway for controlling Casambi Bluetooth via DALI.



Mounting
 ERCO 3-circuit track
 Hi-trac 3-circuit track
 1-circuit singlet

For your regional contact in the ERCO
 Sales network click here
www.erco.com/contact

Technical Region: 220-240V 50/60Hz
 We reserve the right to make technical and design changes.
 Edition: 21.12.2020
 Current version under
www.erco.com/58519.000

Planning data

Cleaning (a)	1				2				3			
	P	C	N	D	P	C	N	D	P	C	N	D
LMF	0.96	0.94	0.90	0.86	0.93	0.91	0.86	0.81	0.92	0.90	0.84	0.79
RSMF	0.99	0.97	0.95	0.92	0.98	0.97	0.95	0.92	0.98	0.97	0.95	0.92

Hours of operation (h)	1000	5000	10000	20000	30000	40000	50000
LLMF	1.00	0.99	0.98	0.96	0.94	0.92	0.90
LSF	1	1	1	1	1	1	1

MF	LMFxRSMFxLLMFxLSF
MF	Maintenance Factor
LMF	Luminaire Maintenance Factor
RSMF	Room Surface Maintenance Factor
LLMF	Lamp Lumens Maintenance Factor
LSF	Lamp Survival Factor
P	Room pure
C	Room clean
N	Room normal
D	Room dirty

Technical data in accordance with international norms and standards

IEC 60598	Luminaires – Part 1+2: general requirements, specific requirements and tests
IEC 62031	LED modules for general lighting – safety requirements
IEC 62471	Photobiological safety of lamps and lamp systems
EN 13032-4	Light and lighting – measurement and representation of photometric data
CIE 13	Method of measuring and specifying colour rendering properties of light sources

All technical data is subject to industrially standard tolerances.
Also see www.erco.com/erco-led

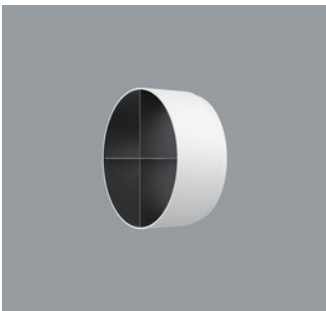
Accessories



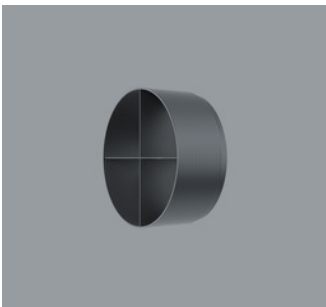
70684.000
Snoot
Polymer.
White



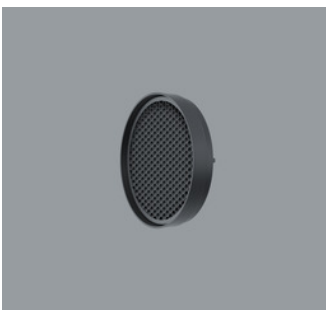
70635.000
Snoot
Polymer.
Black



78037.000
Cross-baffle
Aluminium, coated black, polymer
outer.
White







78041.000
Cross-baffle
Aluminium, coated black, polymer
outer.
Black







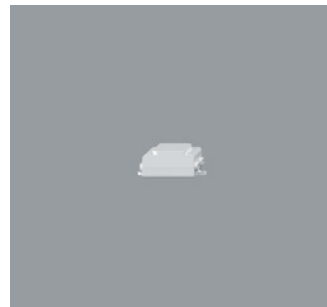
78033.000
Honeycomb anti-glare screen
Black



55248.000
ERCO Casambi motion detector with
light sensor
for ERCO 220-240V track.
Setup via Casambi app (Android/iOS)
with Bluetooth Low Energy (BLE)-
capable mobile devices.
Use for daylight-dependent light con-
trol with or without motion detector.
Detection range of infrared (PIR) sensor
100°/ 5m. At 3m room height, this is a
circle with diameter of approx. 7m.
3-phase adapter for ERCO 220-240V
track: plastic, white.
White
Weight 0.18kg







55249.000
ERCO Casambi motion detector with
light sensor
for ERCO 220-240V track.
Setup via Casambi app (Android/iOS)
with Bluetooth Low Energy (BLE)-
capable mobile devices.
Use for daylight-dependent light con-
trol with or without motion detector.
Detection range of infrared (PIR) sensor
100°/ 5m. At 3m room height, this is a
circle with diameter of approx. 7m.
3-phase adapter for ERCO 220-240V
track: polymer, black.
Black
Weight 0.18kg







55251.000
DALI Casambi Gateway
Enables DALI systems to be connected
to luminaires, sensors and control units
with Casambi Bluetooth. The gateway
can only be operated in Evolution
networks. Power is supplied exclusively
via the DALI bus. Connection via two
lines which must be designed for
mains voltage. The gateway requires
no DALI addresses, the devices appear
as non-configured devices in the DALI
system. Addressing/commissioning
is performed via the DALI control. It
can individually control 64 devices,
and via the broadcast command up to
249 devices.