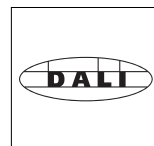


56423.000 White (RAL9002)
 LED module: 12W 1260lm 3000K warm white
 Casambi Bluetooth
 Version 6
 Spherolit lens, wallwash

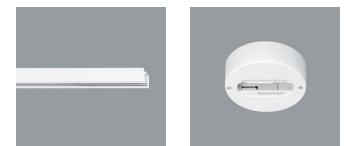
Product description
 Housing and bracket: cast aluminium, powder-coated. 0°-90° tilt. Bracket on 3-circuit adapter rotatable through 360°. Internal wiring. ERCO Casambi control gear. 3-phase adapter for ERCO 220-240V track: polymer, white.
 LED module: high-power LEDs on metal-core PCB. Collimating lens made of optical polymer.
 Front cover: polymer, black.
 Control via Casambi app (Android/iOS) with Bluetooth Low Energy (BLE)-capable mobile devices or "Casambi Ready" products.
 Weight 0.90kg

Technical data

Luminous flux of the luminaire	1000lm
Connected load	15.0W
Luminaire efficacy	67lm/W
Colour deviation	1.5 SDCM
Colour rendition index	CRI 92
Lumen maintenance (LED manufacturer specifications)	L90/B10 ≤50000h L90 ≤100000h
LED failure rate	0.1% ≤50000h
Dimming range	0.1%-100%
Dimming method	CCR
LMF	E
Energy efficiency class	--
Standby power per control gear	0.38W
Luminaires per circuit breaker B16	205



DALI controllable via accessory
 DALI Casambi Gateway for controlling Casambi Bluetooth via DALI.



Mounting
 ERCO 3-circuit track
 Hi-trac 3-circuit track
 1-circuit singlet

For your regional contact in the ERCO
 Sales network [click here](http://www.ercosales.com)
www.ercosales.com/contact

Technical Region: 220-240V 50/60Hz
 We reserve the right to make technical and design changes.
 Edition: 12.05.2021
 Current version under
www.ercosales.com/56423.000

Planning data

Illuminance E_n (lx)

Specifications:

Number of luminaires $n > 5$

Wall height (m) 4.0

Angle of tilt 35°

LED module: 12W 1260lm 3000K warm white

Offset from wall (m)	1.25		1.25		1.50		1.50	
	1.25		1.50		1.50		1.75	
Luminaire spacing (m)	below the luminaire	between the luminaires	below the luminaire	between the luminaires	below the luminaire	between the luminaires	below the luminaire	between the luminaires
0.500	98	105	83	87	60	64	51	55
0.800	154	166	134	133	95	102	84	85
1.100	188	207	165	163	121	131	108	108
1.400	199	219	175	174	134	148	120	122
1.700	200	216	174	173	139	153	124	126
2.000	191	206	165	166	139	150	123	125
2.300	178	193	153	157	135	145	119	121
2.600	162	177	138	145	126	138	111	116
2.900	144	157	121	130	119	129	104	109
3.200	125	136	104	114	109	119	94	101
3.500	106	114	88	96	98	107	84	92

Cleaning (a)	1				2				3			
	P	C	N	D	P	C	N	D	P	C	N	D
LMF	0.96	0.94	0.90	0.86	0.93	0.91	0.86	0.81	0.92	0.90	0.84	0.79
RSMF	0.99	0.97	0.95	0.92	0.98	0.97	0.95	0.92	0.98	0.97	0.95	0.92

Hours of operation (h)	1000	5000	10000	20000	30000	40000	50000
LLMF	1.00	0.99	0.98	0.96	0.94	0.92	0.90
LSF	1	1	1	1	1	1	1

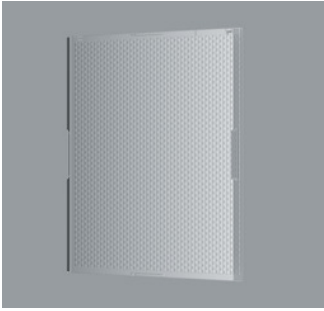
- MF LMFxRSMFxLLMFxLSF
- MF Maintenance Factor
- LMF Luminaire Maintenance Factor
- RSMF Room Surface Maintenance Factor
- LLMF Lamp Lumens Maintenance Factor
- LSF Lamp Survival Factor
- P Room pure
- C Room clean
- N Room normal
- D Room dirty

Technical data in accordance with international norms and standards

IEC 60598	Luminaires – Part 1+2: general requirements, specific requirements and tests
IEC 62031	LED modules for general lighting – safety requirements
IEC 62471	Photobiological safety of lamps and lamp systems
EN13032-4	Light and lighting – measurement and representation of photometric data
CIE 13	Method of measuring and specifying colour rendering properties of light sources

All technical data is subject to industry-standard tolerances.
Also see www.erco.com/erco-led

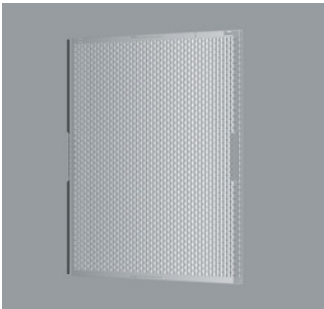
Accessories



70918.000
Spherolit lens spot
made of optical polymer.
Replacement without tools.



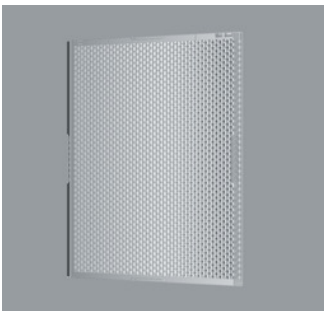
79838.000
Snoot
Polymer.
White



70919.000
Spherolit lens flood
made of optical polymer.
Replacement without tools.



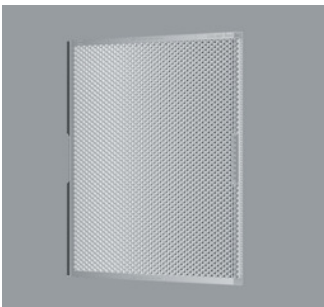
70608.000
Snoot
Polymer.
Black



70920.000
Spherolit lens wide flood
made of optical polymer.
Replacement without tools.



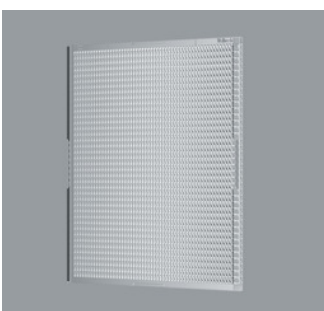
55251.000
DALI Casambi Gateway
Enables DALI systems to be connected to luminaires, sensors and control units with Casambi Bluetooth. The gateway can only be operated in Evolution networks. Power is supplied exclusively via the DALI bus. Connection via two lines which must be designed for mains voltage. The gateway requires no DALI addresses, the devices appear as non-configured devices in the DALI system. Addressing/commissioning is performed via the DALI control. It can individually control 64 devices, and via the broadcast command up to 249 devices.



70979.000
Spherolit lens extra wide flood
made of optical polymer.
Replacement without tools.



70915.000
Spherolit lens oval flood
made of optical polymer.
Replacement without tools.



70922.000
Spherolit lens wallwash
made of optical polymer.
Replacement without tools.