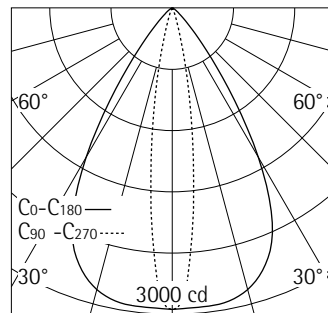


56417.000 White (RAL9002)
 LED module: 12W 1260lm 3000K warm white
 Casambi Bluetooth
 Version 6
 Spherolit lens, oval flood

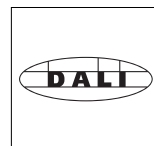
Product description
 Housing and bracket: cast aluminium, powder-coated. 0°-90° tilt. Bracket on 3-circuit adapter rotatable through 360°. Internal wiring. ERCO Casambi control gear. 3-phase adapter for ERCO 220-240V track: polymer, white. LED module: high-power LEDs on metal-core PCB. Collimating lens made of optical polymer. Lens mountable turned through 90°. Front cover: polymer, black. Control via Casambi app (Android/iOS) with Bluetooth Low Energy (BLE)-capable mobile devices or "Casambi Ready" products. Weight 0.90kg



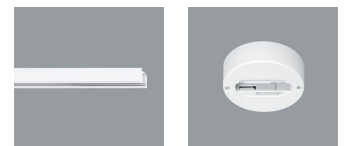
h(m)	E(lx)	D(m)	
		C0	C90
		63°	16°
1	2952	1.23	0.28
2	738	2.45	0.56
3	328	3.68	0.84
4	185	4.90	1.12
5	118	6.13	1.41

Technical data

Luminous flux of the luminaire	1042lm
Connected load	15.0W
Luminaire efficacy	69lm/W
Colour deviation	1.5 SDCM
Colour rendition index	CRI 92
Lumen maintenance (LED manufacturer specifications)	L90/B10 ≤50000h L90 ≤100000h
LED failure rate	0.1% ≤50000h
Dimming range	0.1%-100%
Dimming method	CCR
LMF	E
Energy efficiency class	--
Standby power per control gear	0.38W
Luminaires per circuit breaker B16	205



DALI controllable via accessory
 DALI Casambi Gateway for controlling Casambi Bluetooth via DALI.



Mounting
 ERCO 3-circuit track
 Hi-trac 3-circuit track
 1-circuit singlet

For your regional contact in the ERCO
 Sales network click here
www.erco.com/contact

Technical Region: 220-240V 50/60Hz
 We reserve the right to make technical and design changes.
 Edition: 12.05.2021
 Current version under
www.erco.com/56417.000

Planning data

Cleaning (a)	1				2				3			
	P	C	N	D	P	C	N	D	P	C	N	D
LMF	0.96	0.94	0.90	0.86	0.93	0.91	0.86	0.81	0.92	0.90	0.84	0.79
RSMF	0.99	0.97	0.95	0.92	0.98	0.97	0.95	0.92	0.98	0.97	0.95	0.92

Hours of operation (h)	1000	5000	10000	20000	30000	40000	50000
LLMF	1.00	0.99	0.98	0.96	0.94	0.92	0.90
LSF	1	1	1	1	1	1	1

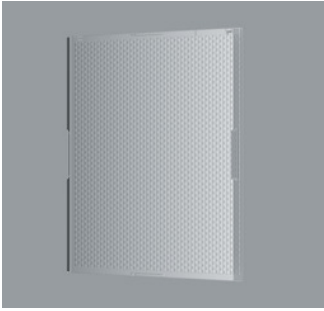
MF	LMFxRSMFxLLMFxLSF
MF	Maintenance Factor
LMF	Luminaire Maintenance Factor
RSMF	Room Surface Maintenance Factor
LLMF	Lamp Lumens Maintenance Factor
LSF	Lamp Survival Factor
P	Room pure
C	Room clean
N	Room normal
D	Room dirty

Technical data in accordance with international norms and standards

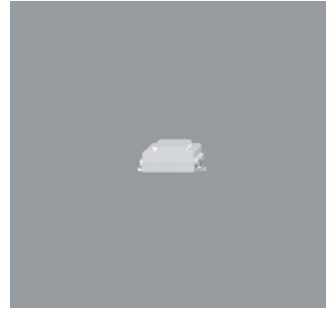
IEC 60598	Luminaires – Part 1+2: general requirements, specific requirements and tests
IEC 62031	LED modules for general lighting – safety requirements
IEC 62471	Photobiological safety of lamps and lamp systems
EN13032-4	Light and lighting – measurement and representation of photometric data
CIE 13	Method of measuring and specifying colour rendering properties of light sources

All technical data is subject to industry-standard tolerances.
Also see www.erco.com/erco-led

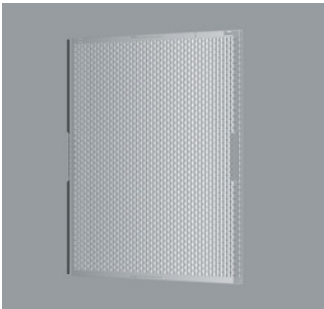
Accessories



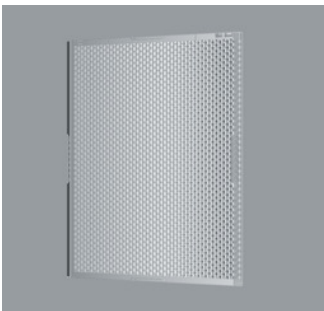
70918.000
Spherolit lens spot
made of optical polymer.
Replacement without tools.



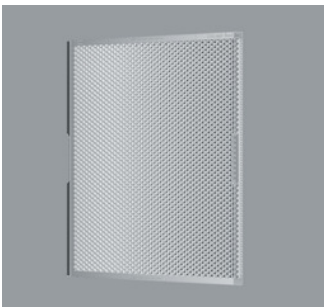
55251.000
DALI Casambi Gateway
Enables DALI systems to be connected to luminaires, sensors and control units with Casambi Bluetooth. The gateway can only be operated in Evolution networks. Power is supplied exclusively via the DALI bus. Connection via two lines which must be designed for mains voltage. The gateway requires no DALI addresses, the devices appear as non-configured devices in the DALI system. Addressing/commissioning is performed via the DALI control. It can individually control 64 devices, and via the broadcast command up to 249 devices.



70919.000
Spherolit lens flood
made of optical polymer.
Replacement without tools.



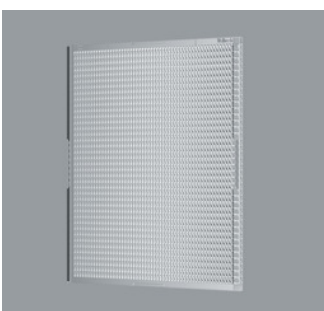
70920.000
Spherolit lens wide flood
made of optical polymer.
Replacement without tools.



70979.000
Spherolit lens extra wide flood
made of optical polymer.
Replacement without tools.



70915.000
Spherolit lens oval flood
made of optical polymer.
Replacement without tools.



70922.000
Spherolit lens wallwash
made of optical polymer.
Replacement without tools.