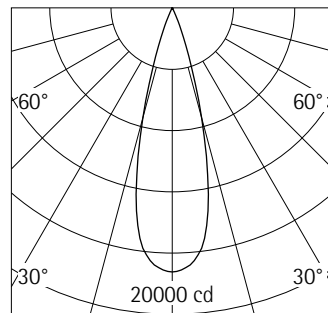


**34586.000** Graphit m  
 LED 48W 5040lm 3000K warm white  
 DALI-2  
 Version 4  
 Spherolit lens, flood

**Product description**  
 Housing, hinge and mounting plate: corrosion-resistant cast aluminium, No-Rinse surface treatment. Double powder-coated. Optimised surface for reduced accumulation of dirt. Hinge with internal wiring, 90° tilt. Graduated disc: corrosion-resistant aluminium. Mounting plate rotatable through 300°. 2 DALI control units each with one DALI address. 2 cable entries. Through-wiring possible. 5-pole terminal block.  
 LED module: high-power LEDs on metal-core PCB. Collimating lens made of optical polymer.  
 Screw-fastened cover frame with safety glass: cast aluminium, black powder-coated.  
 Protection mode IP65: dust-proof and water jet-proof.  
 Weight 6.20kg  
 Housing temperature 45°C  
 Maximum wind load area 0.07m<sup>2</sup>  
 Version with 3000K CRI 97 or 2700K, 3500K, 4000K CRI 92 available on request.



h(m)	E(lx)	D(m)
		28°
2	4309	1.00
4	1077	1.99
6	479	2.99
8	269	3.99
10	172	4.99

**Technical data**

Luminous flux of the luminaire	4032lm
Connected load	55.0W
Luminaire efficacy	73lm/W
Colour deviation	1.5 SDCM
Colour rendition index	CRI 92
Lumen maintenance (LED manufacturer specifications)	L90/B10 ≤50000h L90 ≤100000h
LED failure rate	0.1% ≤50000h
Dimming range	1%-100%
Dimming method	CCR
LMF	E
Energy efficiency class	EEI A+
Standby power per control gear	--
Luminaires per circuit breaker B16	17

For your regional contact in the ERCO  
 Sales network click here  
[www.erco.com/contact](http://www.erco.com/contact)

Technical Region: 220-240V 50/60Hz  
 We reserve the right to make technical and design changes.  
 Edition: 13.10.2020  
 Current version under  
[www.erco.com/34586.000](http://www.erco.com/34586.000)

## Planning data

Cleaning (a)	1				2				3			
	P	C	N	D	P	C	N	D	P	C	N	D
LMF	0.96	0.94	0.90	0.86	0.93	0.91	0.86	0.81	0.92	0.90	0.84	0.79
RSMF	0.99	0.97	0.95	0.92	0.98	0.97	0.95	0.92	0.98	0.97	0.95	0.92

Hours of operation (h)	1000	5000	10000	20000	30000	40000	50000
LLMF	1.00	0.99	0.98	0.96	0.94	0.92	0.90
LSF	1	1	1	1	1	1	1

MF	LMFxRSMFxLLMFxLSF
MF	Maintenance Factor
LMF	Luminaire Maintenance Factor
RSMF	Room Surface Maintenance Factor
LLMF	Lamp Lumens Maintenance Factor
LSF	Lamp Survival Factor
P	Room pure
C	Room clean
N	Room normal
D	Room dirty

### Technical data in accordance with international norms and standards

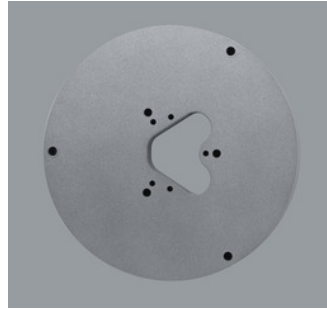
IEC 60598	Luminaires – Part 1+2: general requirements, specific requirements and tests
IEC 62031	LED modules for general lighting – safety requirements
IEC 62471	Photobiological safety of lamps and lamp systems
EN 13032-4	Light and lighting – measurement and representation of photometric data
CIE 13	Method of measuring and specifying colour rendering properties of light sources

All technical data is subject to industrially standard tolerances.  
 Also see [www.erco.com/erco-led](http://www.erco.com/erco-led)

## Accessories



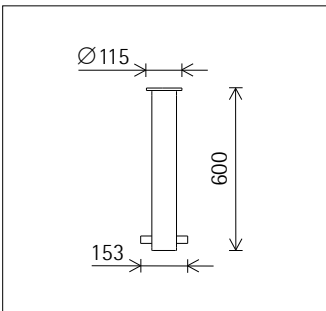
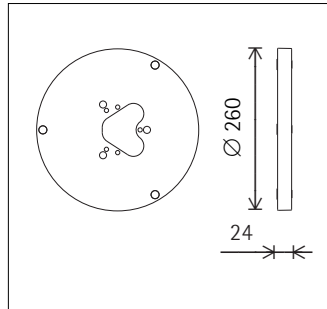
**34974.000**  
Distribution box, IP68  
With four cable entries, 7-25mm.  
Polymer.  
ø 102mm, L 305mm.  
Weight 0.47kg  
CE IP 68 3m



**33982.000**  
Mounting plate  
Corrosion-resistant cast aluminium,  
No-Rinse surface treatment. Graphit m,  
double powder-coated.  
Weight 1.70kg



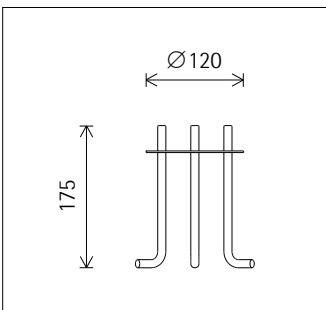
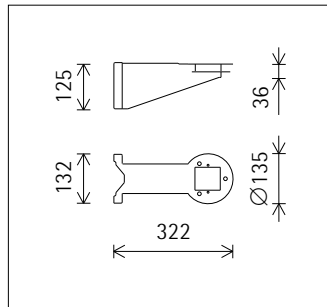
**33974.000**  
Ground socket  
Metal, hot-dip galvanised.  
Weight 2.90kg



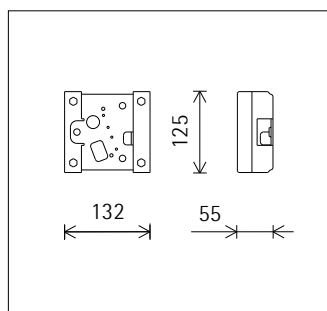
**34955.000**  
Cantilever arm  
for standing luminaire installation on  
upright supporting pole ø 60-89mm or  
wall.  
Housing: stainless steel. Graphit m,  
powder-coated.  
Clamping plate or second cantilever  
arm for fixing on upright supporting  
pole to be ordered separately.  
Upright supporting pole ø 60-89mm to  
be ordered separately.  
Weight 2.20kg



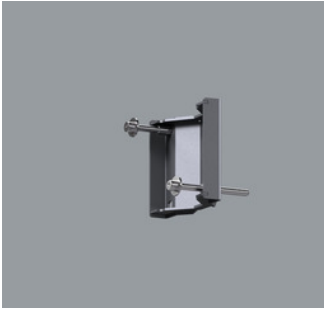
**33981.000**  
Concrete anchor  
Mounting plate with threaded bar and  
fixing nuts M10. Individual parts to be  
assembled on-site.  
Weight 0.76kg



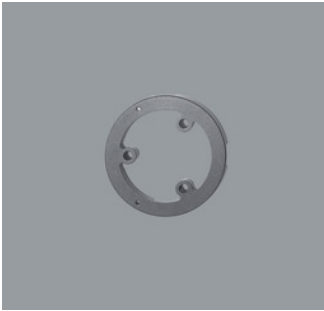
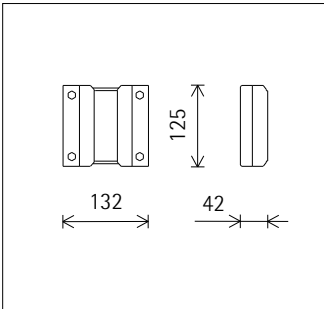
**34953.000**  
Attachment  
for upright supporting pole  
ø 60-89mm.  
Housing: stainless steel. Graphit m,  
powder-coated.  
Clamping plate or second attachment  
for fixing to be ordered separately.  
Upright supporting pole ø 60-89mm to  
be ordered separately.  
Weight 1.00kg



## Accessories



**34954.000**  
 Clamping plate  
 for fixing cantilever arm or attachment  
 on upright supporting pole  $\varnothing$  60–  
 89mm.  
 Housing: stainless steel. Graphit m,  
 powder-coated.  
 Cantilever arm or attachment to be  
 ordered separately.  
 Weight 0.80kg  
 Only in conjunction with  
 34953.000  
 34955.000



**34991.000**  
 Spacer  
 for surface-mounted cables.  
 Corrosion-resistant cast aluminium,  
 No-Rinse surface treatment. Graphit m,  
 double powder-coated.  
 Weight 0.23kg

