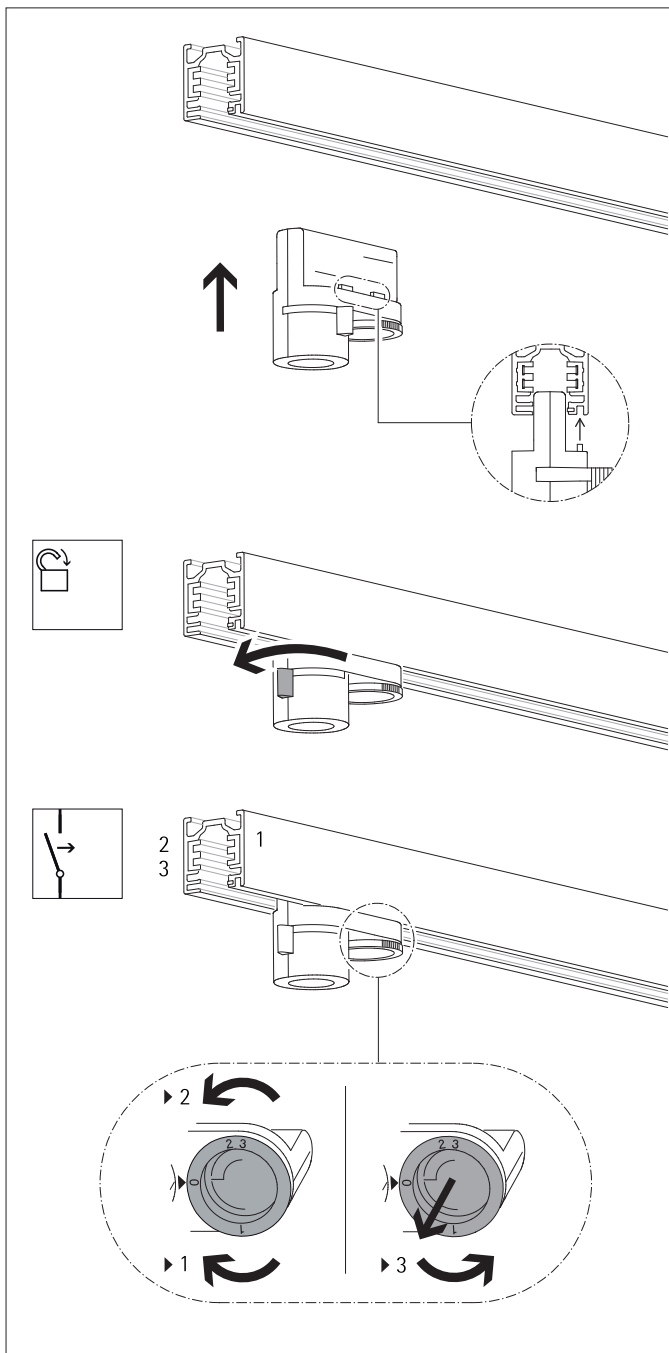
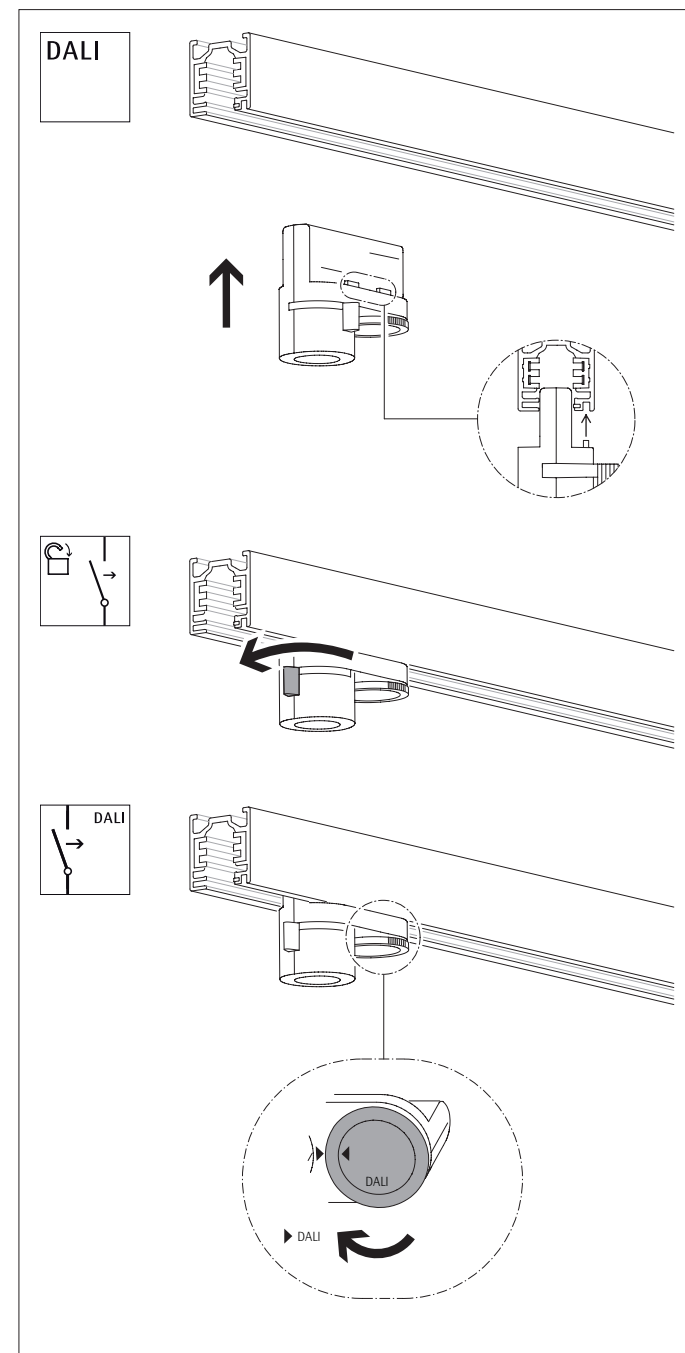


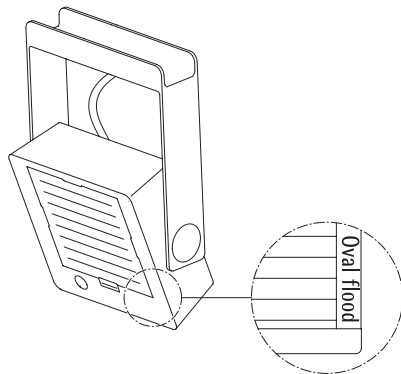
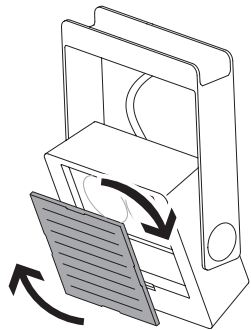
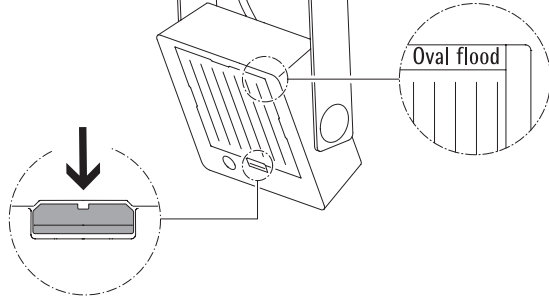
Spotlight Floodlight Lens wallwasher



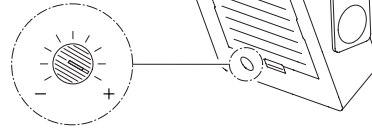
Spotlight Floodlight Lens wallwasher



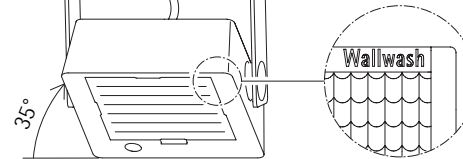
Floodlight



Spotlight Floodlight Lens wallwasher



Lens wallwasher



English

Follow the attached mounting instructions.

Notes and safety instructions

Luminaires for ERCO track

English

Follow the luminaire installation instructions.



Read the instructions carefully before installation and commissioning!



Leave the instructions for users/customers for future reference!



Our updated product documentation can be accessed at www.erco.com/download.

General safety information



Warning!
Risk of electric shock!

- Before carrying out maintenance and installation on the luminaire, disconnect from the mains supply and also from any other DALI control wiring, and ensure that all power is switched off.
- Never operate luminaires with damaged connection cables. The connection cable may only be replaced by the manufacturer.

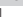


Caution!
Blue light hazard!

Position the luminaire marked with one of two adjacent pictograms so that extended gazing into the luminaire from a distance of less than x m is not expected. Find the value for x in the included graphic installation instructions.




Caution!
Risk of fire!

This sign  on the luminaire symbolises the safety distance between luminaire and directly illuminated object in beam direction. Failure to keep this safety distance may damage the object or cause fire.



Caution!
Risk of burns!

Luminaire with this pictogram  in the attached graphic mounting instructions may reach surface temperatures of more than 60° and cause skin burns. This luminaire must be installed outside of the hand area.

Attention!

- In case of damage or a defective LED module, the entire luminaire must be returned to the factory.
- When installing, always observe the national installation and accident prevention regulations.

Intended use



The luminaire is suitable for use in dry interiors only.

- The luminaire is only approved for mounting in ERCO 220-240V track.
- If ERCO adapters are used with products manufactured by third parties,

no liability can be accepted for the electrical safety and functionality of the combined system or for consequential damage resulting from the combination. The liability for defective ERCO adapters remains unaffected.

Restrictions

Luminaires with transadapters or DALI transadapters may not be installed in singlets.

Wall-mounting

If track is mounted horizontally, only luminaires weighing up to a maximum of 2kg may be used.
If vertically mounted, the guiding groove on the track profile must be facing to the right. Only use luminaires weighing up to a maximum of 3.5kg.

Choosing the mounting location

Position the luminaire so as to avoid operation in direct sunlight or near other sources of heat. High ambient temperatures can reduce the life and efficiency of the control gear or LED module.

Operating DALI luminaires

RGBW luminaires

By combining red, green and blue colour mixing with warm white LEDs at different dimming levels, all colours, shades and colour temperatures can be created. To control the colours via a DALI system with colour management, the signal input has a DALI interface with an address for the luminaire. When operated using a system without colour management, 3 addresses per luminaire are used.

The colour compensation guarantees that exactly the same colour of light is obtained from all controlled luminaires which have the same DALI control settings.

Parscan Ø 188mm

To control the luminaire, the 2 addresses must be grouped.

DALI standard

For general information on DALI, please go to:
www.digitalilluminationinterface.org.

Luminaires with Casambi Bluetooth control

- For control of the luminaire you need a Bluetooth 4.0-capable smartphone or tablet and the Casambi app for iOS or Android downloadable for free in the specific app stores.
- You can couple up to 127 luminaires in a Casambi mesh network. This number can be increased via several parallel networks.
- Because the switching signal in a mesh network is transferred from luminaire to luminaire, the spacing between two luminaires must not exceed 10m. This distance may be less according to the environment. For this reason you should check possible spacing between the

luminaires prior to installation.

- ERCO GmbH hereby declares that the track luminaires with Casambi control are compliant to Directive 2014/53/EU. Radio operation is implemented on frequency bands 2402 – 2480MHz with maximum transmission power of 4dBm. The complete text of the EU declaration of conformity is available at the following internet address:
www.erco.com/casambi-ce.

Electrical installation

For 3-circuit installation: to avoid any damage to the control gear, the neutral conductor must never be connected or disconnected during operation.

Overvoltage protection

ERCO uses electronic control gear with overvoltage protection in accordance with DIN EN 61547. If additional protection from spikes is required, e.g. when switching off inductive loads, separate overvoltage protection units should be installed.

Dimming

Depending on the version, the luminaire can be dimmed via suitable dimmers (trailing edge).

Trailing edge dimmers

Follow the manufacturer's installation instructions.

For some products, the luminaire can only be switched on in the upper dimming range. Before installation and connection, check luminaire, control gear and dimmer combination for proper functioning of the dimmer, especially when using universal dimmers.

The use of dimmers which are unsuitable for LED drivers can damage the luminaire, control gear and/or the dimmer. No responsibility is accepted for the use of dimmers that are unsuitable for the luminaire.

On-board Dim (potentiometer)

The luminous flux can be continuously dimmed with the rotary control on the luminaire, also in addition to the dimmer with trailing edge technology.

Rotating the light distribution

- When using floodlights with oval flood characteristic, the orientation of the beam can be rotated.
When undoing the lens mount, ensure that the Spherolit lens does not fall out.
- When using wallwashers, ensure correct rotation of the Spherolit lens wall-wash, as otherwise this will alter the light distribution.

Flashing of the LED module

It is normal for the LED module to flicker when switching on and off.

Cleaning

Always clean carefully using a soft cloth and a commercially available,

ph-neutral, alcohol-free, non-abrasive cleaning agent.

Disposal



In accordance with EU Directive WEEE (Waste Electrical and Electronic Equipment), luminaires must not be disposed of with other household waste. At the end of their life, luminaires must be taken to the appropriate local facility available for the disposal or recycling of electronic products.