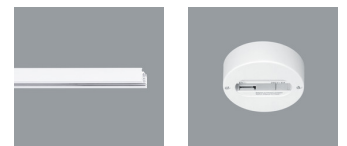


72509.000 White (RAL9002)
 LED 12W 1650lm 4000K neutral white
 Phase dimmable+ On-board Dim
 Version 7
 Spherolit lens, wallwash

Product description
 Housing and bracket: cast aluminium, powder-coated. 0°-90° tilt. Bracket rotatable through 360° on 3-circuit adapter.
 ERCO control gear, dimmable. Rotary control for brightness regulation.
 3-phase adapter for ERCO 220-240V track: polymer, white.
 LED module: high-power LEDs on metal-core PCB. Collimating lens made of optical polymer.
 Front cover: polymer, black.
 Dimming with external dimmers possible (trailing edge).
 Weight 0.75kg

Technical data

| | |
|---|---------------------------------|
| Luminous flux of the luminaire | 1275lm |
| Connected load | 15.0W |
| Luminaire efficacy | 85lm/W |
| Colour deviation | 1.5 SDCM |
| Colour rendition index | CRI 82 |
| Lumen maintenance (LED manufacturer specifications) | L90/B10 ≤50000h L90 ≤100000h |
| LED failure rate | 0.1% ≤50000h |
| Dimming range | 1%-100% |
| Dimming method | CCR_PWM |
| LMF | E |
| Energy efficiency class | EEI A++ |
| Standby power per control gear | -- |
| Luminaires per circuit breaker B16 | 203 |



Mounting

ERCO 3-circuit track
 Hi-trac 3-circuit track
 1-circuit singlet

For your regional contact in the ERCO
 Sales network click here
www.ercos.com/contact

Technical Region: 220-240V 50/60Hz
 We reserve the right to make technical
 and design changes.
 Edition: 19.10.2020
 Current version under
www.ercos.com/72509.000

Planning data

Illuminance E_n (lx)

Specifications:

Number of luminaires $n > 5$

Wall height (m) 4.0

Angle of tilt 35°

LED 12W 1650lm 4000K neutral white

| Offset from wall (m) | 1.25 | | 1.50 | | 1.50 | |
|-----------------------|---------------------|------------------------|---------------------|------------------------|---------------------|------------------------|
| | 1.25 | | 1.50 | | 1.75 | |
| Luminaire spacing (m) | below the luminaire | between the luminaires | below the luminaire | between the luminaires | below the luminaire | between the luminaires |
| 0.250 | 37 | 38 | 27 | 27 | 22 | 24 |
| 0.500 | 88 | 94 | 55 | 59 | 47 | 51 |
| 0.750 | 156 | 167 | 95 | 102 | 83 | 86 |
| 1.000 | 209 | 225 | 130 | 138 | 114 | 116 |
| 1.250 | 241 | 266 | 156 | 169 | 139 | 138 |
| 1.500 | 254 | 280 | 170 | 189 | 152 | 154 |
| 1.750 | 257 | 279 | 177 | 195 | 157 | 160 |
| 2.000 | 254 | 270 | 179 | 194 | 159 | 161 |
| 2.250 | 239 | 258 | 179 | 190 | 158 | 158 |
| 2.500 | 227 | 244 | 171 | 183 | 150 | 153 |
| 2.750 | 209 | 226 | 163 | 176 | 143 | 148 |
| 3.000 | 189 | 205 | 155 | 167 | 136 | 141 |
| 3.250 | 168 | 181 | 145 | 156 | 126 | 133 |
| 3.500 | 147 | 157 | 133 | 144 | 115 | 123 |
| 3.750 | 127 | 134 | 121 | 131 | 104 | 112 |

| Cleaning (a) | 1 | | | | 2 | | | | 3 | | | |
|--------------|------|------|------|------|------|------|------|------|------|------|------|------|
| | P | C | N | D | P | C | N | D | P | C | N | D |
| LMF | 0.96 | 0.94 | 0.90 | 0.86 | 0.93 | 0.91 | 0.86 | 0.81 | 0.92 | 0.90 | 0.84 | 0.79 |
| RSMF | 0.99 | 0.97 | 0.95 | 0.92 | 0.98 | 0.97 | 0.95 | 0.92 | 0.98 | 0.97 | 0.95 | 0.92 |

| Hours of operation (h) | 1000 | 5000 | 10000 | 20000 | 30000 | 40000 | 50000 |
|------------------------|------|------|-------|-------|-------|-------|-------|
| LLMF | 1.00 | 0.99 | 0.98 | 0.96 | 0.94 | 0.92 | 0.90 |
| LSF | 1 | 1 | 1 | 1 | 1 | 1 | 1 |

- MF LMFxRSMFxLLMFxLSF
- MF Maintenance Factor
- LMF Luminaire Maintenance Factor
- RSMF Room Surface Maintenance Factor
- LLMF Lamp Lumens Maintenance Factor
- LSF Lamp Survival Factor
- P Room pure
- C Room clean
- N Room normal
- D Room dirty

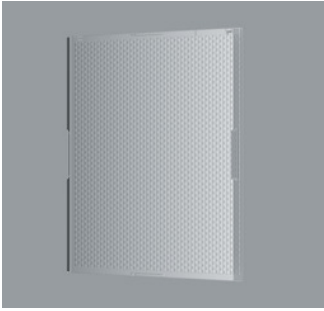
Technical data in accordance with international norms and standards

- IEC 60598 Luminaires – Part 1+2: general requirements, specific requirements and tests
- IEC 62031 LED modules for general lighting – safety requirements
- IEC 62471 Photobiological safety of lamps and lamp systems
- EN 13032-4 Light and lighting – measurement and representation of photometric data
- CIE 13 Method of measuring and specifying colour rendering properties of light sources

All technical data is subject to industrially standard tolerances.

Also see www.erco.com/erco-led

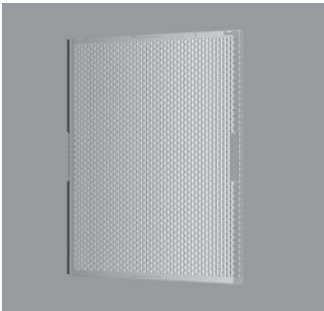
Accessories



70918.000
Spherolit lens spot
made of optical polymer.
Replacement without tools.



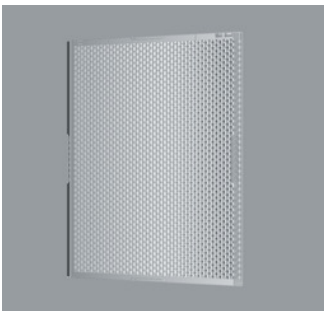
79838.000
Snoot
Polymer.
White



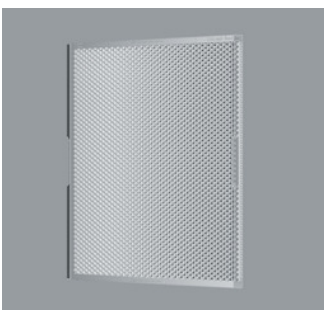
70919.000
Spherolit lens flood
made of optical polymer.
Replacement without tools.



70608.000
Snoot
Polymer.
Black



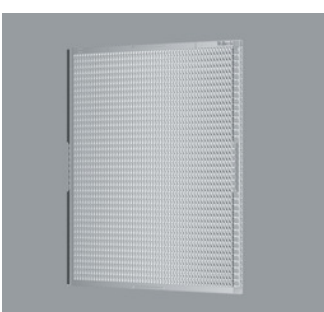
70920.000
Spherolit lens wide flood
made of optical polymer.
Replacement without tools.



70979.000
Spherolit lens extra wide flood
made of optical polymer.
Replacement without tools.



70915.000
Spherolit lens oval flood
made of optical polymer.
Replacement without tools.



70922.000
Spherolit lens wallwash
made of optical polymer.
Replacement without tools.