

**79697.000** Black  
 LED 6W 630lm 3000K warm white  
 DALI-2  
 Version 4  
 Spherolit lens, wallwash

**Product description**  
 Housing and bracket: cast aluminium, powder-coated. 0°-90° tilt. Bracket on DALI adapter rotatable through 360°. Internal wiring. ERCO DALI control gear. DALI adapter for ERCO DALI 220-240V track: polymer, black. LED module: high-power LEDs on metal-core PCB. Collimating lens made of optical polymer. Weight 0.70kg. Housing temperature 40°C

### Technical data

Luminous flux of the luminaire	525lm
Connected load	8.6W
Luminaire efficacy	61lm/W
Colour deviation	1.5 SDCM
Colour rendition index	CRI 92
Lumen maintenance (LED manufacturer specifications)	L90/B10 ≤50000h L90 ≤100000h
LED failure rate	0.1% ≤50000h
Dimming range	0.1%-100%
Dimming method	CCR
LMF	E
Energy efficiency class	EEI A+
Standby power per control gear	0.4W
Luminaires per circuit breaker B16	260



**Mounting**  
 ERCO DALI track  
 Hi-trac DALI track  
 DALI singlet

For your regional contact in the ERCO  
 Sales network click here  
[www.ercos.com/contact](http://www.ercos.com/contact)

Technical Region: 220-240V 50/60Hz  
 We reserve the right to make technical  
 and design changes.  
 Edition: 19.10.2020  
 Current version under  
[www.ercos.com/79697.000](http://www.ercos.com/79697.000)

## Planning data

### Illuminance $E_n$ (lx)

Specifications:

Number of luminaires  $n > 5$

Wall height (m) 3.0

Angle of tilt 35°

LED 6W 630lm 3000K warm white

Offset from wall (m)	1.00		1.25		1.50		1.75	
	1.00		1.25		1.50		1.75	
Luminaire spacing (m)	below the luminaire	between the luminaires	below the luminaire	between the luminaires	below the luminaire	between the luminaires	below the luminaire	between the luminaires
0.250	49	52	39	42	35	32	24	26
0.500	102	111	85	87	79	63	48	50
0.750	146	154	125	116	117	82	71	71
1.000	162	177	139	130	130	90	86	83
1.250	165	182	141	135	132	94	91	90
1.500	164	177	139	133	129	94	92	93
1.750	157	166	133	126	122	91	92	91
2.000	143	151	120	117	109	86	90	88
2.250	125	133	103	103	93	78	85	84
2.500	106	112	86	89	76	69	77	78
2.750	88	92	70	74	61	59	69	70

Cleaning (a)	1				2				3			
	P	C	N	D	P	C	N	D	P	C	N	D
LMF	0.96	0.94	0.90	0.86	0.93	0.91	0.86	0.81	0.92	0.90	0.84	0.79
RSMF	0.99	0.97	0.95	0.92	0.98	0.97	0.95	0.92	0.98	0.97	0.95	0.92

Hours of operation (h)	1000	5000	10000	20000	30000	40000	50000
LLMF	1.00	0.99	0.98	0.96	0.94	0.92	0.90
LSF	1	1	1	1	1	1	1

MF	LMFxRSMF <sub>x</sub> LLMF <sub>x</sub> LSF
MF	Maintenance Factor
LMF	Luminaire Maintenance Factor
RSMF	Room Surface Maintenance Factor
LLMF	Lamp Lumens Maintenance Factor
LSF	Lamp Survival Factor
P	Room pure
C	Room clean
N	Room normal
D	Room dirty

### Technical data in accordance with international norms and standards

IEC 60598	Luminaires – Part 1+2: general requirements, specific requirements and tests
IEC 62031	LED modules for general lighting – safety requirements
IEC 62471	Photobiological safety of lamps and lamp systems
EN 13032-4	Light and lighting – measurement and representation of photometric data
CIE 13	Method of measuring and specifying colour rendering properties of light sources

All technical data is subject to industrially standard tolerances.  
Also see [www.ercos.com/erco-led](http://www.ercos.com/erco-led)

## Accessories



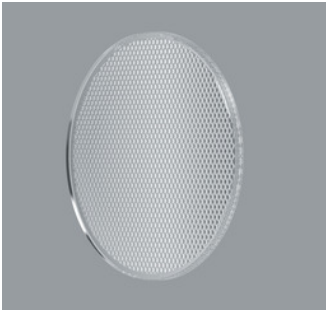
**70851.000**  
Spherolit lens spot  
made of optical polymer.  
Replacement without tools.



**74397.000**  
Snoot  
Polymer.  
Black



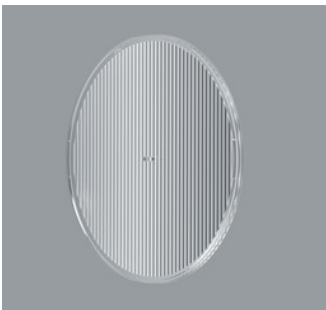
**70852.000**  
Spherolit lens flood  
made of optical polymer.  
Replacement without tools.



**70853.000**  
Spherolit lens wide flood  
made of optical polymer.  
Replacement without tools.



**70978.000**  
Spherolit lens extra wide flood  
made of optical polymer.  
Replacement without tools.



**70854.000**  
Spherolit lens oval flood  
made of optical polymer.  
Replacement without tools.



**70855.000**  
Spherolit lens wallwash  
made of optical polymer.  
Replacement without tools.