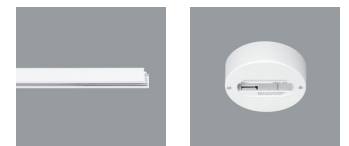


72236.000 White (RAL9002)
 LED module: 24W 2520lm 3000K warm white
 Switchable
 Version 5
 Spherolit lens, wallwash

Product description
 Cylindrical light head: cast aluminium, powder-coated. 270° tilt.
 Housing: polymer, rotatable on 3-circuit adapter through 360°.
 ERCO control gear.
 3-phase adapter for ERCO 220-240V track: polymer, white.
 LED module: high-power LEDs on metal-core PCB. Collimating lens made of optical polymer.
 Protection Class II
 Weight 1.08kg

Technical data

Luminous flux of the luminaire	2059lm
Connected load	27.0W
Luminaire efficacy	76lm/W
Colour deviation	1.5 SDCM
Colour rendition index	CRI 92
Lumen maintenance (LED manufacturer specifications)	L90/B10 ≤50000h L90 ≤100000h
LED failure rate	0.1% ≤50000h
Dimming range	--
Dimming method	--
LMF	E
Standby power per control gear	--
Luminaires per circuit breaker B16	44



Mounting
 ERCO 3-circuit track
 Hi-trac 3-circuit track
 1-circuit singlet

For your regional contact in the ERCO
 Sales network click here
www.erco.com/contact

Technical Region: 220-240V 50/60Hz
 We reserve the right to make technical and design changes.
 Edition: 15.10.2021
 Current version under
www.erco.com/72236.000

Planning data

Illuminance E_n (lx)

Specifications:

Number of luminaires $n > 5$

Wall height (m) 6.0

Angle of tilt 35°

LED module: 24W 2520lm 3000K warm white

Offset from wall (m)	1.75		1.75		2.00		2.00	
	1.75		2.25		2.00		2.75	
Luminaire spacing (m)	below the luminaire	between the luminaires	below the luminaire	between the luminaires	below the luminaire	between the luminaires	below the luminaire	between the luminaires
0.500	79	87	62	68	56	61	42	44
1.000	153	164	127	122	106	115	84	77
1.500	205	221	175	156	147	158	121	99
2.000	224	238	191	168	167	180	139	111
2.500	224	227	190	163	172	180	143	113
3.000	204	209	170	150	168	170	137	109
3.500	182	187	150	136	155	157	125	101
4.000	153	160	124	119	139	142	110	93
4.500	125	131	100	100	119	124	93	83
5.000	100	104	79	81	100	105	76	73
5.500	80	81	62	64	83	86	62	61

Cleaning (a)	1				2				3			
	P	C	N	D	P	C	N	D	P	C	N	D
LMF	0.96	0.94	0.90	0.86	0.93	0.91	0.86	0.81	0.92	0.90	0.84	0.79
RSMF	0.99	0.97	0.95	0.92	0.98	0.97	0.95	0.92	0.98	0.97	0.95	0.92

Hours of operation (h)	1000	5000	10000	20000	30000	40000	50000
LLMF	1.00	0.99	0.98	0.96	0.94	0.92	0.90
LSF	1	1	1	1	1	1	1

- MF LMFxRSMFxLLMFxLSF
- MF Maintenance Factor
- LMF Luminaire Maintenance Factor
- RSMF Room Surface Maintenance Factor
- LLMF Lamp Lumens Maintenance Factor
- LSF Lamp Survival Factor
- P Room pure
- C Room clean
- N Room normal
- D Room dirty

Technical data in accordance with international norms and standards

- IEC 60598 Luminaires – Part 1+2: general requirements, specific requirements and tests
- IEC 62031 LED modules for general lighting – safety requirements
- IEC 62471 Photobiological safety of lamps and lamp systems
- EN 13032-4 Light and lighting – measurement and representation of photometric data
- CIE 13 Method of measuring and specifying colour rendering properties of light sources

All technical data is subject to industry-standard tolerances.
Also see www.erco.com/erco-led

Accessories



70863.000
Spherolit lens spot
made of optical polymer.
Replacement without tools.



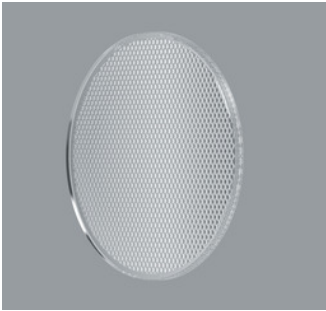
70694.000
Snoot
Polymer.
White



70848.000
Spherolit lens flood
made of optical polymer.
Replacement without tools.



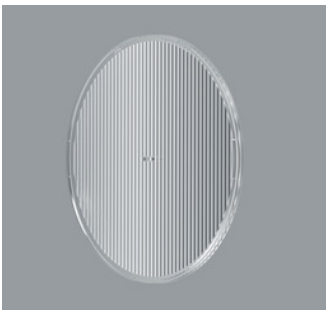
70636.000
Snoot
Polymer.
Black



70849.000
Spherolit lens wide flood
made of optical polymer.
Replacement without tools.



73998.000
Spherolit lens extra wide flood
made of optical polymer.
Replacement without tools.



70864.000
Spherolit lens oval flood
made of optical polymer.
Replacement without tools.



70865.000
Spherolit lens wallwash
made of optical polymer.
Replacement without tools.