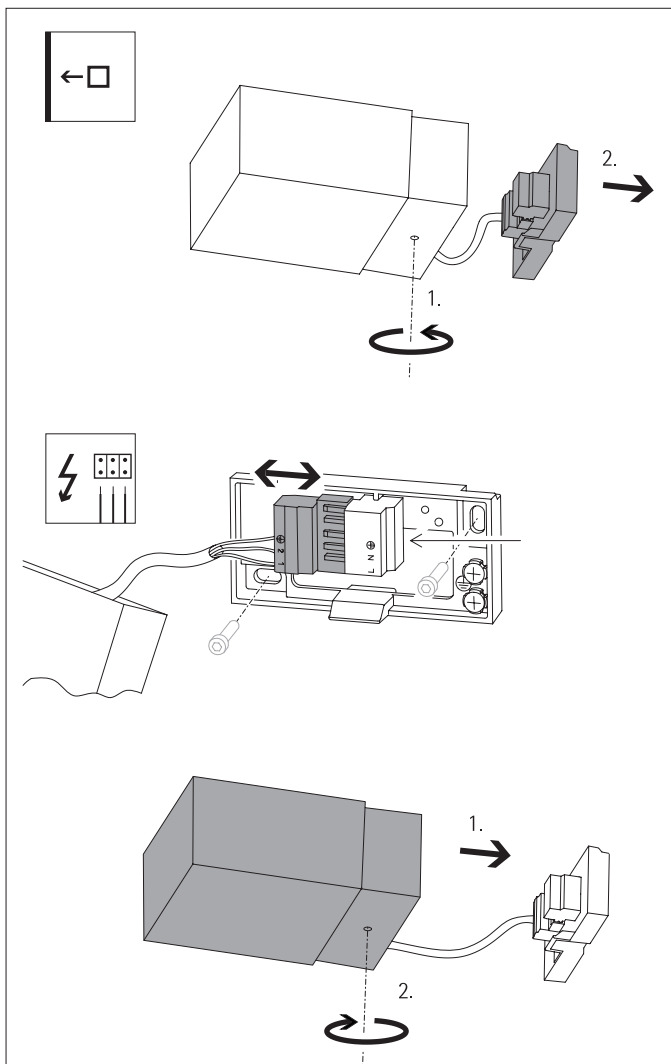
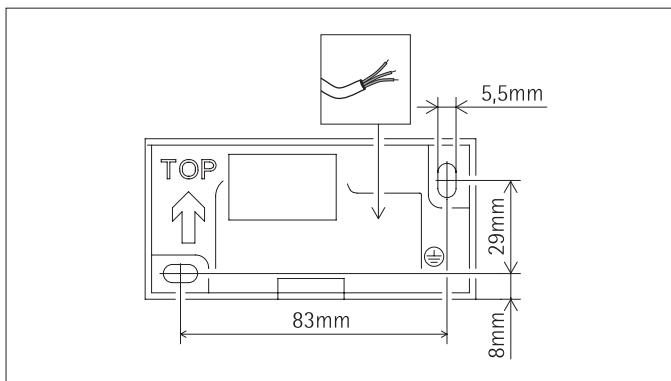


## Pantrac Ceiling washlight

### Mounting instructions



#### English

Read the instructions carefully before installation and commissioning!

Leave the instructions for users/customers for future reference!

Our updated product documentation can be accessed at [www.erco.com/download](http://www.erco.com/download).

#### General safety information

**Warning!**  
**Risk of electric shock!**

Before carrying out maintenance and installation on the luminaire, disconnect from the mains supply and also from any other DALI control wiring, and ensure that all power is switched off.

#### Attention!

- Do not operate luminaires with damaged or missing protective covers.
- Do not open the luminaire head. In case of damage or a defective LED module, the entire luminaire must be returned to the factory.
- When installing, always observe the national installation and accident prevention regulations.

#### Intended use

The luminaire is suitable for use in dry interiors only.

- The luminaire is approved for wall mounting only.

#### Choosing the mounting location

Position the luminaire so as to avoid operation in direct sunlight or near other sources of heat. High ambient temperatures can reduce the life and efficiency of the control gear or LED module.

#### Electrical installation

The connector is prepared for through-wiring (looping in).

- For 3-circuit installation: to avoid any damage to the control gear, the neutral conductor must never be connected or disconnected during operation.

#### Overvoltage protection

ERCO uses electronic control gear with overvoltage protection in accordance with DIN EN 61547. If additional protection from spikes is required, e.g. when switching off inductive loads, separate overvoltage protection units should be installed.

#### Luminaire with DALI control gear

- All cables, materials and devices used must be suitable for mains voltage, as the DALI signal is not transmitted using safety extra low voltage (SELV).

- For general information on DALI, please go to: [www.digitalilluminationinterface.org](http://www.digitalilluminationinterface.org).

#### Mounting

1. Remove mounting plate from the luminaire.
2. Disconnect connector plug and use mounting plate as drilling template.
3. Make the electric connection.
4. Screw luminaire onto mounting plate.

#### Dimming

Depending on the version, the luminaire can be dimmed via suitable dimmers (trailing edge).

#### Trailing edge dimmers

Follow the manufacturer's installation instructions. For some products, the luminaire can only be switched on in the upper dimming range. Before installation and connection, check luminaire, control gear and dimmer combination for proper functioning of the dimmer, especially when using universal dimmers. The use of dimmers which are unsuitable for LED drivers can damage the luminaire, control gear and/or the dimmer.

**No responsibility is accepted for the use of dimmers that are unsuitable for the luminaire.**

#### Flashing of the LED module

It is normal for the LED module to flicker when switching on and off.

#### Cleaning

Always clean carefully using a soft cloth and a commercially available, ph-neutral, alcohol-free, non-abrasive cleaning agent.

#### Disposal

In accordance with EU Directive WEEE (Waste Electrical and Electronic Equipment), luminaires must not be disposed of with other household waste. At the end of their life, luminaires must be taken to the appropriate local facility available for the disposal or recycling of electronic products.